

DANTE PCIe SOUND CARD

Smart and ultra versatile

Redefine 'versatility' with the PCIe ALP-DANTE audio interface: its low-profile form-factor design matches all PCs and servers to address many applications. Its fanless design reduces consumption and is an asset for durability and sustainability. The card's connectivity, combined with 64 channels of playback and 64 recording channels to/from a Dante network, opens new possibilities to reach beyond usual applications.

ALP-DANTE operates under Windows or Linux environments to address various applications. Built on the same reliable and stable architecture as all ALP-X cards, ALP-DANTE is the perfect match for mission-critical applications where audio is key: its versatility works wonders in broadcast, public safety, medical, transportation, or countless industry markets.

Low profile PCIe
Fanless design

2 or 4 Eth ports for
redundant Dante
network connectivity



Compatibility with
AES67 & SMPTE
ST2110-30

Management via Dante
controller and Dante
device manager

KEY FEATURES



Drivers for
Windows & Linux

64

64 playback channels
64 recording channels



Switching ports mode
Redundant ports mode

**soon available*



Low Profile
2 Eth ports



Low Profile
4 Eth ports



Full-height Profile
4 Eth ports

1 FORMAT

Form Factor

Low profile PCIe

Full-height PCIe (with the provided additional full-height bracket)

Dimensions

L: 168 mm x H: 69 mm x l: 20 mm
L: 6.6 inch; H: 2.7 inch; l: 0.8 inch

L: 168 mm x H: 99 mm x l: 20 mm
L: 6.6 inch; H: 3.9 inch; l: 0.8 inch

Bus

PCI Express™ x1
(x2, x4, x8, x16 compatible)

2 DRIVERS

Supported OS

Windows (as of Windows 10 and Server 2016)
Linux (as of Kernel 4.1 according to kernel.org)

Drivers

Windows: Asio, Wasapi/DirectSound
Linux: Alsa

One Driver Package

Multi-application and multi-card API available to access the parameters

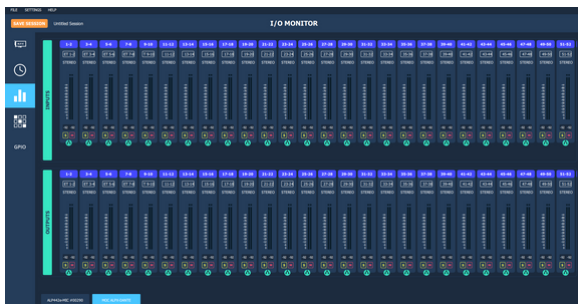
3 CONTROL PANEL

Digigram ALP-X ASIO Settings (Windows)

- Asio Control Panel: up to 8 ALP-X cards
- Select I/Os used through Asio (others can be used through Wasapi)

Digigram ALP-X Manager (Windows)

- **Asio Control Panel: up to 8 ALP-X cards**
- One unified control panel for the whole ALP-X range
- Manages up to 8 ALP-X cards
- Vu-meters, clock frequency
- Firmware update



4 SPECIFICATIONS

Network connectivity

- Configuration with two network ports
2 x Gbps Eth ports that can be used in redundancy mode (Pri, Sec), or in switching mode (Pri, Switch)
- Configuration with four network ports
4 Eth ports on the full-height bracket, or 2 Eth ports on each low-profile bracket
 - Switching mode: 1 Primary port, 3 switching ports
 - Redundancy mode: 1 Primary port + 1 associated switching port, 1 Secondary port + 1 associated switching port

Input and output channels

- 64 x 64 channels at 44.1kHz and 48 kHz
- 32 x 32 channels at 88.2 kHz and 96 kHz
- 16 x 16 channels at 176.4 kHz and 192 kHz

Audio flows

- Maximum 32 input and 32 output streams

Buffering

- Up to 2000 samples per channel (41.7ms at 48 kHz)

AoIP compatibility

- Support for AES67 and SMPTE ST2110-30

Sample format

- PCM 16, 24, 32 bits

Management

- Audinate Dante Controller and Dante Domain Manager